

Laser Medical Center

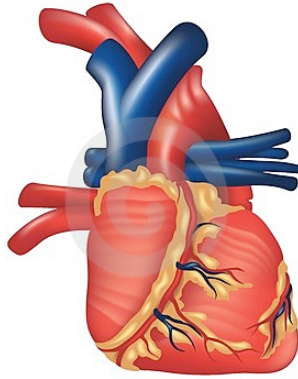
3816 S. Bristol St., Suite M, Santa Ana

Call for appt time: 714.662.7456



Cardio Event

Date: June 14, 2010 Monday 10-6pm



Don't miss a beat...

For one day, LMC will be offering:

- Echocardiogram
- Carotid Duplex
- Peripheral Arterial Exam
- Abdominal Aorta Scan

Procedures will be preformed by :



If you have concerns about the condition of your heart and vascular systems or would just like to have a baseline for the future, this is a convenient and affordable opportunity & too good to pass up.

For more information please don't hesitate to ask...

Please See Reverse side of Flyer for pricing and test information.

Testing Services

Resting Echocardiograms (Offered at \$125)

An echocardiogram is a test in which ultrasound is used to examine the heart. It is a painless procedure that uses a clear liquid gel to obtain images. An echocardiogram provides (2-D) Echo and is capable of displaying a cross-sectional picture of the beating heart, including the chambers, valves and major blood vessels that exit from the left and right ventricle. The echocardiogram also uses Doppler, which assesses blood flow (direction and velocity). Also, echocardiography can assess the pumping ability of each chamber of the heart and also the movement of each visualized wall.

Common indications for ordering the test:

- Hypertensive Heart Disease
- Atrial Fibrillation
- Cardiomegaly
- Syncope and Collapse
- Cardiac Murmur
- SOB
- Chest Pain
- Abnormal EKG

Carotid Duplex (Offered at \$75)

Carotid ultrasound shows whether a material called plaque has narrowed carotid arteries. Plaque is made up of fat, cholesterol, calcium, and other substances found in the blood. It builds up on the insides of arteries.

Common indications for ordering the test:

- Bruit
- Dizziness
- Syncope
- Cerebral Atherosclerosis
- Amaurosis Fugax
- Intractable Migraine

Peripheral Arterial Exams (Offered at \$75)

This is a non-invasive assessment of the arterial flow in the lower extremities with the use of a Doppler spectrum analysis, real-time ultrasound imaging, exercise testing and segmental pressures. Peripheral artery scanning can also assist in the diagnosis of aortic, iliac, femoral and popliteal aneurysms.

Common indications for ordering the test:

- Diabetes w/ peripheral circulation disorders
- Rest pain
- Pain in Limb
- Localized Superficial Swelling Mass/Lump

Abdominal Aorta Scans (Offered at \$75)

The technologist systematically interrogates the entire length of the abdominal aorta as well as the common iliac arteries for the presence of an enlargement. Aortic and common iliac velocity measurements and waveforms are obtained using Doppler. The mesenteric and renal arteries are not evaluated during this study.

Common indications for ordering the test:

- Tobacco Abuse
- ACD
- AAA without rupture
- Abdominal Pain

Offering "The Bundle" the Echocardiogram & any two above tests for \$250